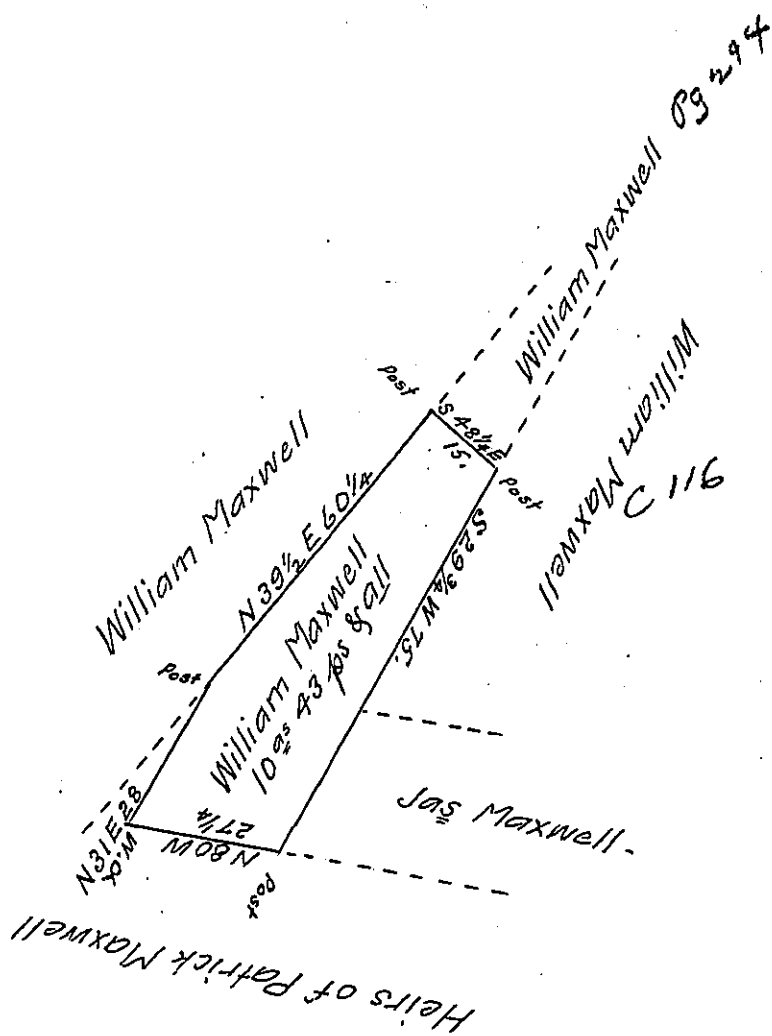


FORM No. 1.



Draught of a Tract of Land Situate in Montgomery Township Franklin County, Containing Ten Acres and forty three perches & allowance of Six ~~to~~ Cent for Roads - Surveyed the 31st day of May 1816 in pursuance of a Warrant Granted W^m Maxwell for 10^{acs} Dated the 14th day of August 1815 -

Arch^d Fleming D.S.

Rich^d T. Leech Esq^r
Surveyor General -

IN TESTIMONY that the above is a copy of the original remaining on file in the Department of Internal Affairs of Pennsylvania, made conformably to an Act of Assembly approved the 16th day of February 1833, I have hereunto set my hand and caused the Seal of said Department to be affixed at Harrisburg, this thirteenth day of January 1908.

Henry Howell
Secretary of Internal Affairs.